

Single Family Monthly Sales Volume

For Month Ending 1/31/2008

Area Name	Current Month			Previous Month			Year Ago Month		
	Units	Volume	Median	Units	Volume	Median	Units	Volume	Median
Central	23	\$10,820,022	\$475,000	48	\$26,038,808	\$566,370	48	\$22,286,943	\$510,330
Haiku	6	\$8,380,000	\$872,500	2	\$2,125,000	\$1,062,500	4	\$2,652,000	\$603,500
Kaanapali	2	\$3,910,000	\$1,955,000	0	\$0	\$0	4	\$8,526,750	\$2,300,875
Kahakuloa	1	\$925,000	\$925,000	0	\$0	\$0	0	\$0	\$0
Kapalua	0	\$0	\$0	1	\$4,150,000	\$4,150,000	2	\$23,090,000	1,545,000
Kihei	10	\$6,300,910	\$537,500	11	\$7,798,435	\$625,000	10	\$8,824,193	\$885,000
Kula/Ulupalakua/Kanaio	0	\$0	\$0	4	\$4,500,000	\$730,000	7	\$4,851,500	\$660,000
Lahaina	3	\$3,565,900	\$770,000	3	\$1,535,000	\$400,000	5	\$11,753,000	\$800,000
Lanai	1	\$525,000	\$525,000	3	\$1,275,000	\$455,000	0	\$0	\$0
Makawao/Olinda/Haliimaile	4	\$2,625,000	\$650,000	3	\$3,424,500	\$539,500	8	\$4,589,000	\$565,000
Maui Meadows	0	\$0	\$0	1	\$995,000	\$995,000	0	\$0	\$0
Napili/Kahana/Honokowai	3	\$9,712,000	\$1,122,000	3	\$2,999,000	\$985,000	2	\$1,900,000	\$950,000
Olowalu	0	\$0	\$0	1	\$500,000	\$500,000	0	\$0	\$0
Pukalani	1	\$510,000	\$510,000	3	\$1,775,000	\$500,000	8	\$5,994,000	\$702,500
Sprecklesville/Paia/Kuau	2	\$1,084,000	\$542,000	1	\$6,000,000	\$6,000,000	2	\$1,145,000	\$572,500
Wailea/Makena	0	\$0	\$0	2	\$12,740,000	\$6,370,000	6	\$42,240,000	\$5,025,000
Maui Summary :	56	\$48,357,832	\$574,113	86	\$75,855,743	\$587,393	106	137,852,386	\$602,000

Condominium Monthly Sales Volume

For Month Ending 1/31/2008

Area Name	Current Month			Previous Month			Year Ago Month		
	Units	Volume	Median	Units	Volume	Median	Units	Volume	Median
Central	5	\$2,064,075	\$295,000	6	\$1,842,000	\$280,000	6	\$1,805,000	\$300,000
Kaanapali	3	\$2,075,000	\$725,000	2	\$2,620,000	\$1,310,000	9	\$10,588,500	\$1,350,000
Kapalua	1	\$1,875,000	\$1,875,000	4	\$7,390,000	\$1,547,500	6	\$11,705,000	\$1,397,500
Kihei	40	\$23,579,994	\$526,500	32	\$18,372,703	\$538,000	23	\$9,901,600	\$366,100
Lahaina	3	\$4,937,000	\$997,000	2	\$1,410,000	\$705,000	11	\$6,088,000	\$529,000
Lanai	0	\$0	\$0	1	\$291,000	\$291,000	0	\$0	\$0
Maalaea	4	\$2,109,840	\$492,420	1	\$827,000	\$827,000	5	\$2,642,500	\$515,000
Molokai	0	\$0	\$0	1	\$200,000	\$200,000	1	\$216,000	\$216,000
Napili/Kahana/Honokowai	13	\$7,299,800	\$538,000	7	\$3,320,500	\$510,000	11	\$4,709,500	\$450,000
Wailea/Makena	20	\$39,998,092	\$1,814,512	16	\$37,255,328	\$2,021,386	27	\$50,145,740	\$1,243,603
Maui Summary :	89	\$83,938,801	\$610,000	72	\$73,528,531	\$635,500	99	\$97,801,840	\$600,000

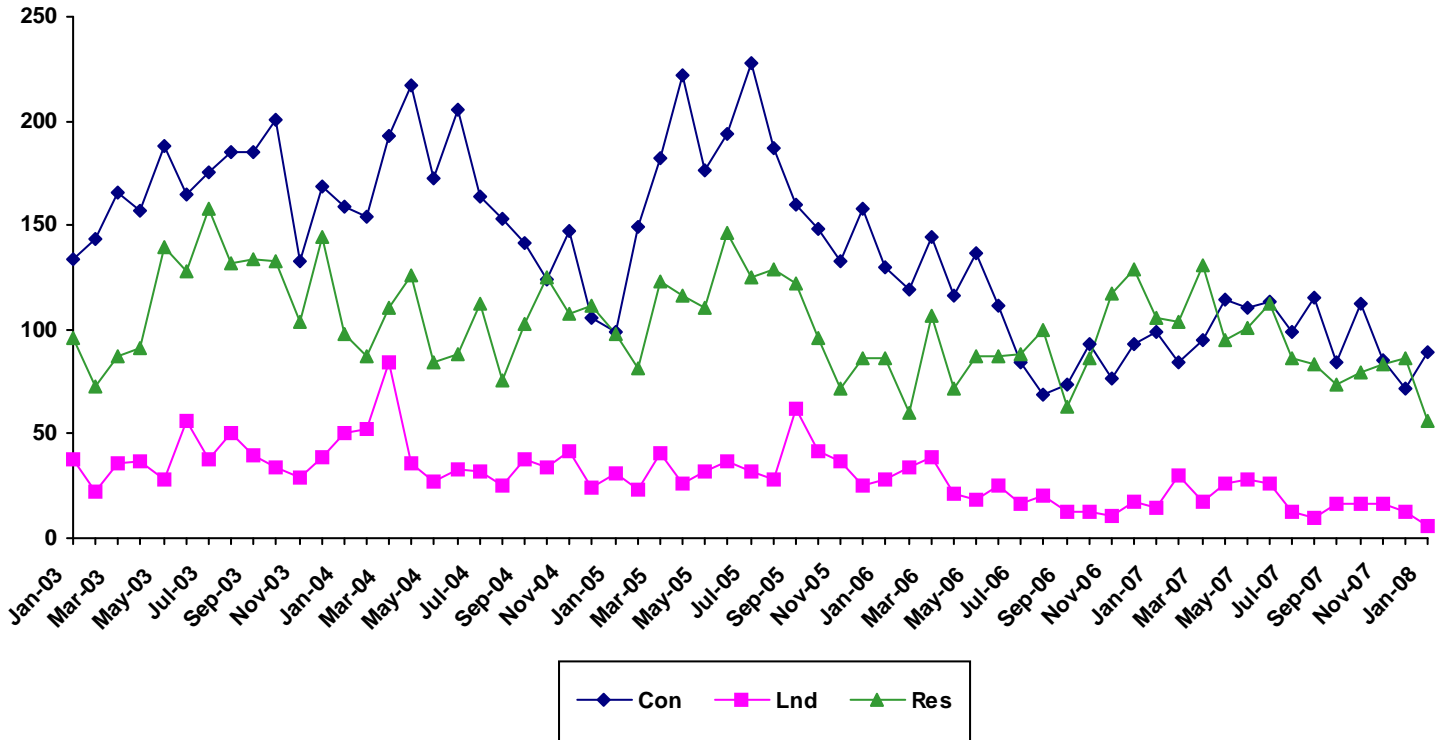
Land Monthly Sales Volume

For Month Ending 1/31/2008

Area Name	Current Month			Previous Month			Year Ago Month		
	Units	Volume	Median	Units	Volume	Median	Units	Volume	Median
Central	0	\$0	\$0	3	\$1,477,000	\$552,000	5	\$3,361,500	\$340,000
Haiku	3	\$2,144,000	\$369,000	2	\$910,000	\$455,000	2	\$845,000	\$422,500
Hana	1	\$315,000	\$315,000	2	\$2,281,999	\$1,141,000	0	\$0	\$0
Kaanapali	1	\$675,000	\$675,000	1	\$800,000	\$800,000	2	\$2,069,000	\$1,034,500
Kapalua	0	\$0	\$0	1	\$2,175,000	\$2,175,000	1	\$2,015,000	\$2,015,000
Kula/Ulupalakua/Kanaio	0	\$0	\$0	1	\$808,000	\$808,000	1	\$700,000	\$700,000
Lahaina	0	\$0	\$0	1	\$550,000	\$550,000	1	\$1,250,000	\$1,250,000
Molokai	0	\$0	\$0	0	\$0	\$0	1	\$90,000	\$90,000
Olowalu	0	\$0	\$0	0	\$0	\$0	1	\$1,395,000	\$1,395,000
Wailea/Makena	1	\$600,000	\$600,000	2	\$2,650,000	\$1,325,000	1	\$2,800,000	\$2,800,000
Maui Summary :	6	\$3,734,000	\$484,500	13	\$11,651,999	\$575,000	15	\$14,525,500	\$700,000

Sales Volume By Month

For Month Ending 1/31/2008

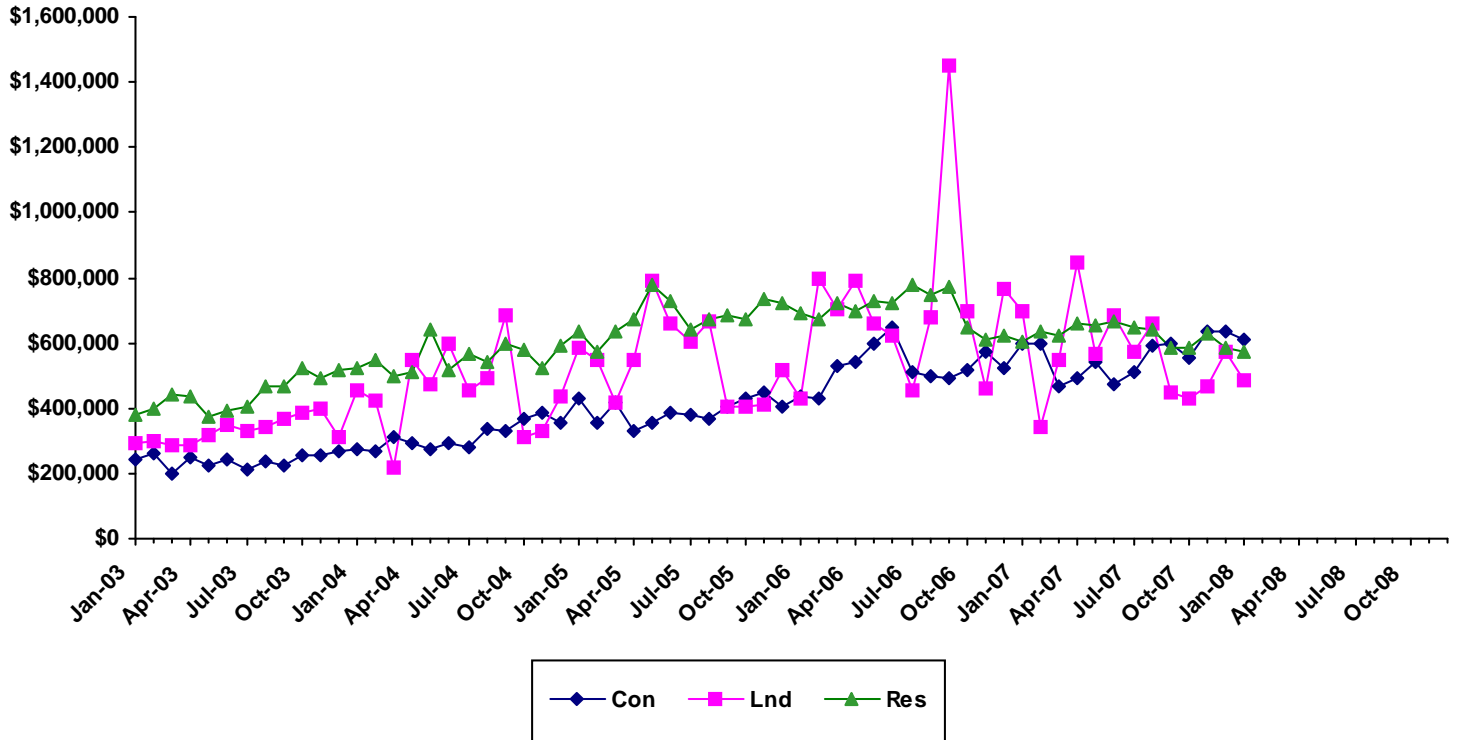


	2003			2004			2005			2006			2007			2008		
Month	Single Family	Condo	Land	Single Family	Condo	Land	Single Family	Condo	Land	Single Family	Condo	Land	Single Family	Condo	Land	Single Family	Condo	Land
Jan	96	134	38	98	159	50	98	99	31	86	130	28	106	99	15	56	89	6
Feb	73	143	22	87	154	52	81	149	23	60	119	34	104	84	30			
Mar	87	166	36	110	193	84	123	182	41	107	144	39	131	95	17			
Apr	91	157	37	126	217	36	116	222	26	72	116	21	95	114	26			
May	140	188	28	84	172	27	110	176	32	87	137	18	101	110	28			
Jun	128	165	56	88	205	33	146	194	37	87	111	25	112	113	26			
Jul	158	175	38	112	164	32	125	228	32	88	84	16	86	99	13			
Aug	132	185	50	76	153	25	129	187	28	100	69	20	83	115	10			
Sep	134	185	40	103	141	38	122	160	62	63	74	13	74	84	16			
Oct	133	201	34	125	124	34	96	148	42	86	93	13	79	112	16			
Nov	104	133	29	108	147	42	72	133	37	117	77	11	83	85	16			
Dec	144	169	39	111	106	24	86	158	25	129	93	17	86	72	13			

SOURCE: REALTORS Association of Maui - www.RAMaui.com
 MLS Sales data - Information deemed reliable, however not guaranteed

Sales Median By Month

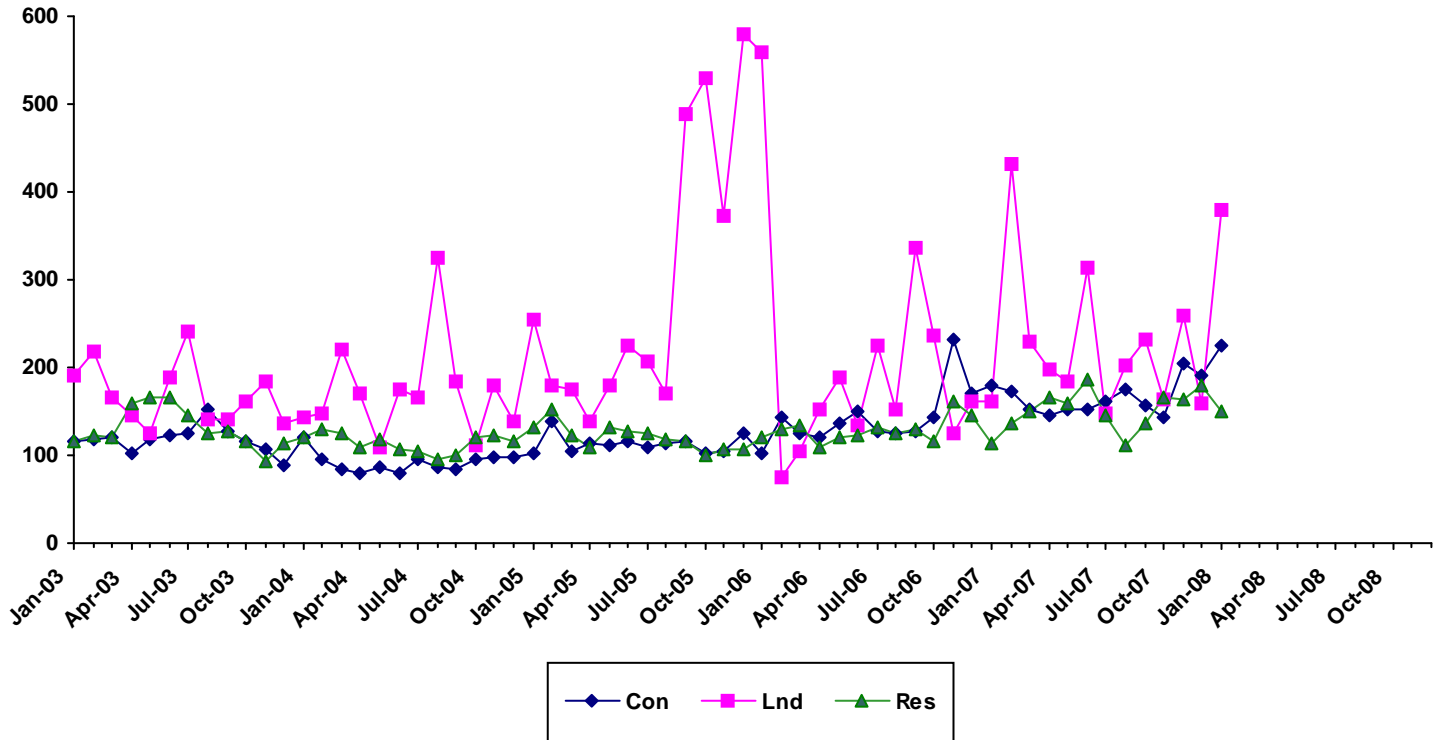
For Month Ending 1/31/2008



Month	2003			2004			2005			2006			2007			2008		
	Single Family	Condo	Land	Single Family	Condo	Land	Single Family	Condo	Land	Single Family	Condo	Land	Single Family	Condo	Land	Single Family	Condo	Land
Jan	379500	239813	292500	520000	275000	454500	632500	430000	584100	690500	433872	430000	602000	600000	700000	574113	610000	484500
Feb	400000	260000	298500	550000	267450	421500	575000	353523	550000	669500	430100	800000	635000	596000	342000			
Mar	442000	199750	284750	499000	310000	218750	635000	416250	415000	725000	527625	701000	625000	469500	550000			
Apr	436739	250000	285000	512500	295000	550000	674000	329500	547500	700000	539500	790000	662000	493500	843750			
May	372500	222500	316450	640000	277000	475000	780000	352500	793750	729000	600000	657500	653746	539063	567000			
Jun	395000	243000	350000	516000	295000	600000	727500	387500	662145	725000	649000	625000	667000	475000	682500			
Jul	406500	214000	328000	567000	277425	452500	642600	380000	603479	780000	512500	452500	650000	510000	575000			
Aug	468500	235000	340000	542500	339000	490000	670000	366500	667500	749500	495000	680000	639996	592000	662500			
Sep	464500	222000	369500	596000	330000	687500	687250	405000	405000	769000	494500	1450000	586000	599000	450000			
Oct	520000	255000	388000	580000	367500	312500	674500	429500	405000	650000	515000	700000	585000	552000	432500			
Nov	492500	255000	398050	525000	385000	333000	734500	450000	410000	609881	575000	460000	631900	635000	465000			
Dec	515000	269000	310150	590000	355000	436000	722500	402500	514000	625205	525000	767472	587393	635500	575000			

Sales Days on Market By Month

For Month Ending 1/31/2008

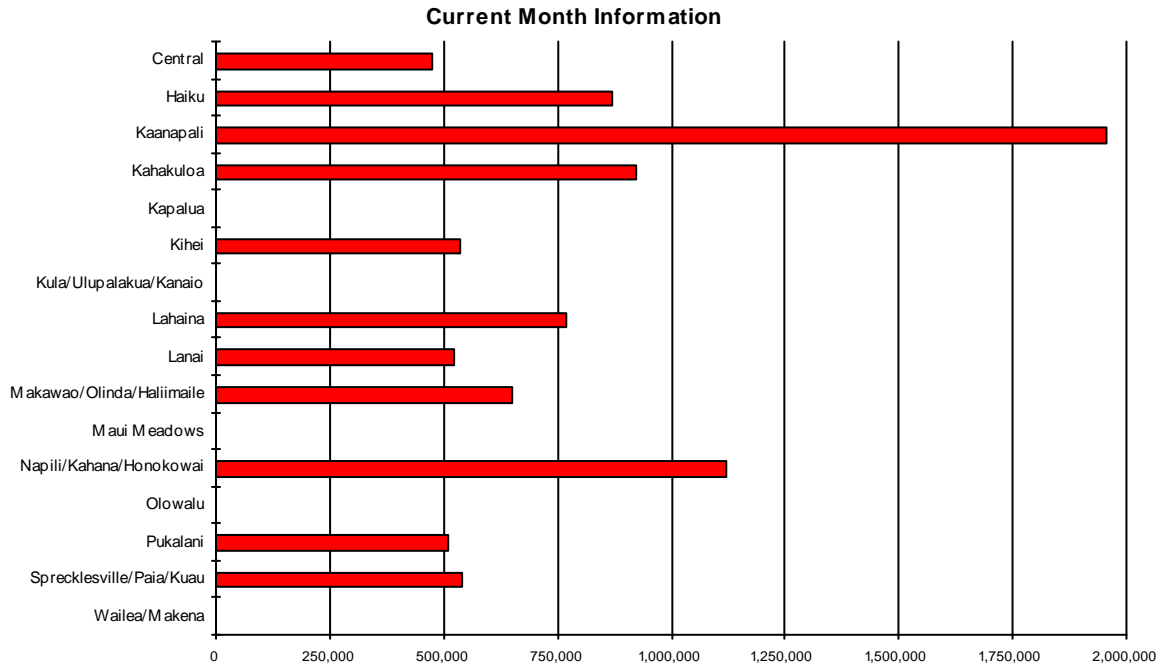


	2003			2004			2005			2006			2007			2008		
Month	Single Family	Condo	Land	Single Family	Condo	Land	Single Family	Condo	Land	Single Family	Condo	Land	Single Family	Condo	Land	Single Family	Condo	Land
Jan	117	116	191	120	121	143	132	102	255	121	102	558	113	180	162	151	226	379
Feb	122	119	219	130	95	148	153	140	179	130	144	75	138	174	432			
Mar	120	120	165	124	83	221	123	104	176	134	126	104	150	152	230			
Apr	158	103	145	109	79	170	110	113	139	108	121	152	166	145	197			
May	167	119	125	119	86	108	132	111	181	121	136	189	158	153	184			
Jun	167	122	190	106	80	175	128	116	224	123	151	133	186	152	314			
Jul	146	125	242	105	95.5	166	126	109	207	131	127	224	146	161	147			
Aug	125	153	141	95	87	325	119	115	170	125	126	153	112	175	203			
Sep	128	128	140	101	85	184	117	115	489	129	128	337	137	157	231			
Oct	116	115	161	120	96	113	101	103	530	116	144	236	165	143	163			
Nov	93	106	184	123	97	180	106	105	372	162	232	124	163	204	259			
Dec	113	88	138	117	98	139	106	126	580	145	170	161	180	192	160			

SOURCE: REALTORS Association of Maui - www.RAMaui.com
 MLS Sale data - Information deemed reliable, however not guaranteed

Single Family Median Prices by Area

For Month Ending 1/31/2008

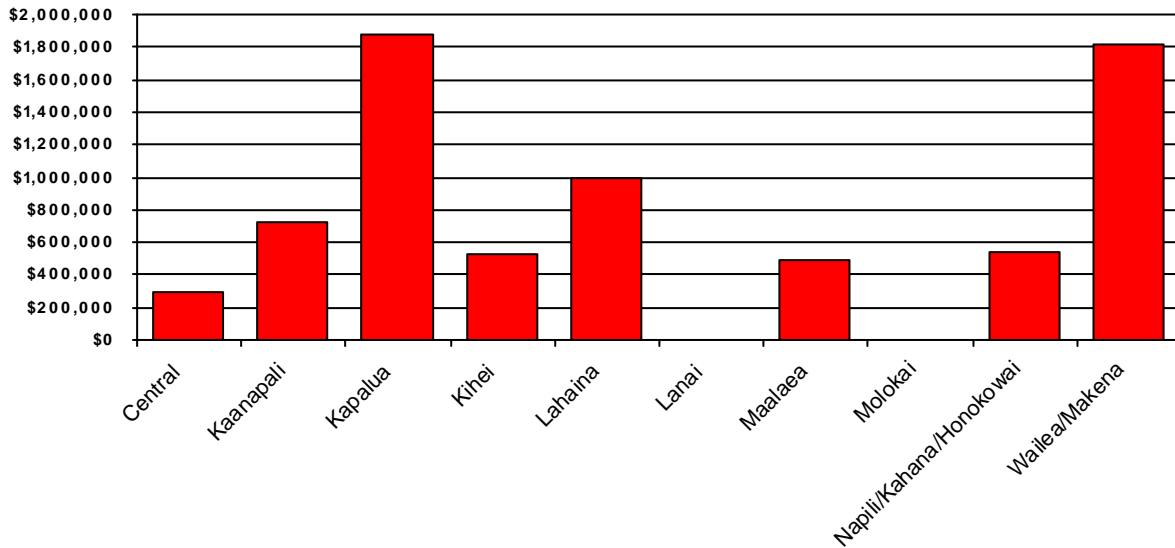


Area	Current Month	Previous Month	Year Ago Month
Central	\$475,000	\$566,370	\$510,330
Haiku	\$872,500	\$1,062,500	\$603,500
Kaanapali	\$1,955,000	\$0	\$2,300,875
Kahakuloa	\$925,000	\$0	\$0
Kapalua	\$0	\$4,150,000	\$11,545,000
Kihei	\$537,500	\$625,000	\$885,000
Kula/Ulupalakua/Kanaio	\$0	\$730,000	\$660,000
Lahaina	\$770,000	\$400,000	\$800,000
Lanai	\$525,000	\$455,000	\$0
Makawao/Olinda/Haliimaile	\$650,000	\$539,500	\$565,000
Maui Meadows	\$0	\$995,000	\$0
Napili/Kahana/Honokowai	\$1,122,000	\$985,000	\$950,000
Olowalu	\$0	\$500,000	\$0
Pukalani	\$510,000	\$500,000	\$702,500
Sprecklesville/Paia/Kuau	\$542,000	\$6,000,000	\$572,500
Wailea/Makena	\$0	\$6,370,000	\$5,025,000

Condominium Median Prices by Area

For Month Ending 1/31/2008

Current Month Information

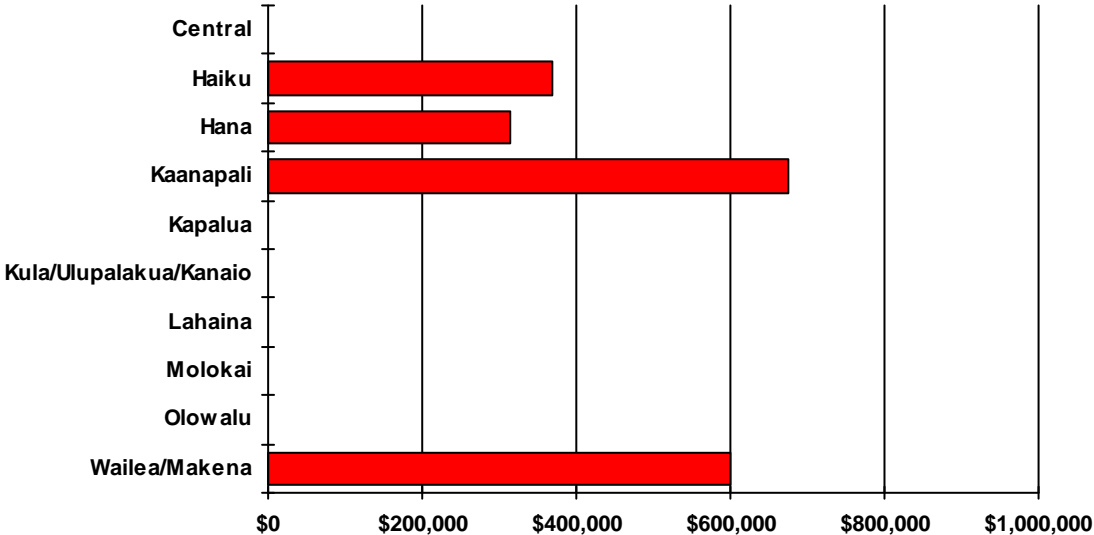


Area	Current Month	Previous Month	Year Ago Month
Central	\$295,000	\$280,000	\$300,000
Kaanapali	\$725,000	\$1,310,000	\$1,350,000
Kapalua	\$1,875,000	\$1,547,500	\$1,397,500
Kihei	\$526,500	\$538,000	\$366,100
Lahaina	\$997,000	\$705,000	\$529,000
Lanai	\$0	\$291,000	\$0
Maalaea	\$492,420	\$827,000	\$515,000
Molokai	\$0	\$200,000	\$216,000
Napili/Kahana/Honokowai	\$538,000	\$510,000	\$450,000
Wailea/Makena	\$1,814,512	\$2,021,386	\$1,243,603

Land Median Prices by Area

For Month Ending 1/31/2008

Current Month Information



Area	Current Month	Previous Month	Year Ago Month
Central	\$0	\$552,000	\$340,000
Haiku	\$369,000	\$455,000	\$422,500
Hana	\$315,000	\$1,141,000	\$0
Kaanapali	\$675,000	\$800,000	\$1,034,500
Kapalua	\$0	\$2,175,000	\$2,015,000
Kula/Ulupalakua/Kanaio	\$0	\$808,000	\$700,000
Lahaina	\$0	\$550,000	\$1,250,000
Molokai	\$0	\$0	\$90,000
Olowalu	\$0	\$0	\$1,395,000
Wailea/Makena	\$600,000	\$1,325,000	\$2,800,000

Single Family Year To Date Sales Information

Comparing 1/1/2008 thru 1/31/2008 with 1/1/2007 thru 1/31/2007

Area	Number of Sales				Average Sales Price			Median Sales Price			Total Dollar Volume		
	Current YTD Sales	Year Ago YTD	Changes Units	%	Current YTD Average	Year Ago YTD Average	Percent Change	Current YTD Median	Year Ago YTD Median	Percent Change	Current YTD Volume	Year Ago YTD Volume	Percent Change
Central	23	48	-25	-52%	\$470,436	\$464,311	1%	\$475,000	\$510,330	-7%	\$10,820,022	\$22,286,943	-51%
Haiku	6	4	2	50%	\$1,396,667	\$663,000	111%	\$872,500	\$603,500	45%	\$8,380,000	\$2,652,000	216%
Hana	0	0	0	N/A	\$0	\$0	N/A	\$0	\$0	N/A	\$0	\$0	N/A
Kaanapali	2	4	-2	-50%	\$1,955,000	\$2,131,688	-8%	\$1,955,000	\$2,300,875	-15%	\$3,910,000	\$8,526,750	-54%
Kahakuloa	1	0	1	N/A	\$925,000	\$0	N/A	\$925,000	\$0	N/A	\$925,000	\$0	N/A
Kapalua	0	2	-2	-100%	\$0	\$11,545,000	-100%	\$0	\$11,545,000	-100%	\$0	\$23,090,000	-100%
Keanae	0	0	0	N/A	\$0	\$0	N/A	\$0	\$0	N/A	\$0	\$0	N/A
Kihei	10	10	0	0%	\$630,091	\$882,419	-29%	\$537,500	\$885,000	-39%	\$6,300,910	\$8,824,193	-29%
Kula/Ulupalakua/Kanaio	0	7	-7	-100%	\$0	\$693,071	-100%	\$0	\$660,000	-100%	\$0	\$4,851,500	-100%
Lahaina	3	5	-2	-40%	\$1,188,633	\$2,350,600	-49%	\$770,000	\$800,000	-4%	\$3,565,900	\$11,753,000	-70%
Lanai	1	0	1	N/A	\$525,000	\$0	N/A	\$525,000	\$0	N/A	\$525,000	\$0	N/A
Makawao/Olinda/Haliimaile	4	8	-4	-50%	\$656,250	\$573,625	14%	\$650,000	\$565,000	15%	\$2,625,000	\$4,589,000	-43%
Maui Meadows	0	0	0	N/A	\$0	\$0	N/A	\$0	\$0	N/A	\$0	\$0	N/A
Molokai	0	0	0	N/A	\$0	\$0	N/A	\$0	\$0	N/A	\$0	\$0	N/A
Nahiku	0	0	0	N/A	\$0	\$0	N/A	\$0	\$0	N/A	\$0	\$0	N/A
Napili/Kahana/Honokowai	3	2	1	50%	\$3,237,333	\$950,000	241%	\$1,122,000	\$950,000	18%	\$9,712,000	\$1,900,000	411%
Olowalu	0	0	0	N/A	\$0	\$0	N/A	\$0	\$0	N/A	\$0	\$0	N/A
Pukalani	1	8	-7	-88%	\$510,000	\$749,250	-32%	\$510,000	\$702,500	-27%	\$510,000	\$5,994,000	-91%
Sprecklesville/Paia/Kuau	2	2	0	0%	\$542,000	\$572,500	-5%	\$542,000	\$572,500	-5%	\$1,084,000	\$1,145,000	-5%
Wailea/Makena	0	6	-6	-100%	\$0	\$7,040,000	-100%	\$0	\$5,025,000	-100%	\$0	\$42,240,000	-100%
Maui Summary:	56	106	-50	-47%	\$863,533	\$1,300,494	-34%	\$574,113	\$602,000	-5%	\$48,357,832	\$137,852,386	-65%

Condominium Year To Date Sales Information

Comparing 1/1/2008 thru 1/31/2008 with 1/1/2007 thru 1/31/2007

Area	Number of Sales				Average Sales Price			Median Sales Price			Total Dollar Volume		
	Current YTD Sales	Year Ago YTD	Changes Units	Changes %	Current YTD Average	Year Ago YTD Average	Percent Change	Current YTD Median	Year Ago YTD Median	Percent Change	Current YTD Volume	Year Ago YTD Volume	Percent Change
Central	5	6	-1	-17%	\$412,815	\$300,833	37%	\$295,000	\$300,000	-2%	\$2,064,075	\$1,805,000	14%
Hana	0	0	0	N/A	\$0	\$0	N/A	\$0	\$0	N/A	\$0	\$0	N/A
Kaanapali	3	9	-6	-67%	\$691,667	\$1,176,500	-41%	\$725,000	\$1,350,000	-46%	\$2,075,000	\$10,588,500	-80%
Kapalua	1	6	-5	-83%	\$1,875,000	\$1,950,833	-4%	\$1,875,000	\$1,397,500	34%	\$1,875,000	\$11,705,000	-84%
Kihei	40	23	17	74%	\$589,500	\$430,504	37%	\$526,500	\$366,100	44%	\$23,579,994	\$9,901,600	138%
Lahaina	3	11	-8	-73%	\$1,645,667	\$553,455	197%	\$997,000	\$529,000	88%	\$4,937,000	\$6,088,000	-19%
Lanai	0	0	0	N/A	\$0	\$0	N/A	\$0	\$0	N/A	\$0	\$0	N/A
Maalaea	4	5	-1	-20%	\$527,460	\$528,500	0%	\$492,420	\$515,000	-4%	\$2,109,840	\$2,642,500	-20%
Molokai	0	1	-1	-100%	\$0	\$216,000	-100%	\$0	\$216,000	-100%	\$0	\$216,000	-100%
Napili/Kahana/Honokowai	13	11	2	18%	\$561,523	\$428,136	31%	\$538,000	\$450,000	20%	\$7,299,800	\$4,709,500	55%
Sprecklesville/Paia/Kuau	0	0	0	N/A	\$0	\$0	N/A	\$0	\$0	N/A	\$0	\$0	N/A
Wailea/Makena	20	27	-7	-26%	\$1,999,905	\$1,857,250	8%	\$1,814,512	\$1,243,603	46%	\$39,998,092	\$50,145,740	-20%
Maui Summary:	89	99	-10	-10%	\$943,133	\$987,897	-5%	\$610,000	\$600,000	2%	\$83,938,801	\$97,801,840	-14%

Fee Simple Condominium Year To Date Sales Information

Comparing 1/1/2008 thru 1/31/2008 with 1/1/2007 thru 1/31/2007

Area	Number of Sales				Average Sales Price			Median Sales Price			Total Dollar Volume		
	Current YTD Sales	Year Ago YTD	Changes Units	%	Current YTD Average	Year Ago YTD Average	Percent Change	Current YTD Median	Year Ago YTD Median	Percent Change	Current YTD Volume	Year Ago YTD Volume	Percent Change
Central	5	6	-1	-17%	\$412,815	\$300,833	37%	\$295,000	\$300,000	-2%	\$2,064,075	\$1,805,000	14%
Hana	0	0	0	N/A	\$0	\$0	N/A	\$0	\$0	N/A	\$0	\$0	N/A
Kaanapali	1	9	-8	-89%	\$790,000	\$1,176,500	-33%	\$790,000	\$1,350,000	-41%	\$790,000	\$10,588,500	-93%
Kapalua	1	6	-5	-83%	\$1,875,000	\$1,950,833	-4%	\$1,875,000	\$1,397,500	34%	\$1,875,000	\$11,705,000	-84%
Kihei	40	23	17	74%	\$589,500	\$430,504	37%	\$526,500	\$366,100	44%	\$23,579,994	\$9,901,600	138%
Lahaina	3	11	-8	-73%	\$1,645,667	\$553,455	197%	\$997,000	\$529,000	88%	\$4,937,000	\$6,088,000	-19%
Lanai	0	0	0	N/A	\$0	\$0	N/A	\$0	\$0	N/A	\$0	\$0	N/A
Maalaea	4	4	0	0%	\$527,460	\$505,000	4%	\$492,420	\$500,000	-2%	\$2,109,840	\$2,020,000	4%
Molokai	0	1	-1	-100%	\$0	\$216,000	-100%	\$0	\$216,000	-100%	\$0	\$216,000	-100%
Napili/Kahana/Honokowai	12	7	5	71%	\$592,333	\$456,000	30%	\$554,000	\$450,000	23%	\$7,108,000	\$3,192,000	123%
Sprecklesville/Paia/Kuau	0	0	0	N/A	\$0	\$0	N/A	\$0	\$0	N/A	\$0	\$0	N/A
Wailea/Makena	20	27	-7	-26%	\$1,999,905	\$1,857,250	8%	\$1,814,512	\$1,243,603	46%	\$39,998,092	\$50,145,740	-20%
Maui Summary:	86	94	-8	-9%	\$958,860	\$1,017,679	-6%	\$620,000	\$605,000	2%	\$82,462,001	\$95,661,840	-14%

Leasehold Condominium Year To Date Sales Information

Comparing 1/1/2008 thru 1/31/2008 with 1/1/2007 thru 1/31/2007

Area	Number of Sales				Average Sales Price			Median Sales Price			Total Dollar Volume		
	Current YTD Sales	Year Ago YTD	Changes Units	Changes %	Current YTD Average	Year Ago YTD Average	Percent Change	Current YTD Median	Year Ago YTD Median	Percent Change	Current YTD Volume	Year Ago YTD Volume	Percent Change
Kaanapali	2	0	2	N/A	\$642,500	\$0	N/A	\$642,500	\$0	N/A	\$1,285,000	\$0	N/A
Kihei	0	0	0	N/A	\$0	\$0	N/A	\$0	\$0	N/A	\$0	\$0	N/A
Maalaea	0	1	-1	-100%	\$0	\$622,500	-100%	\$0	\$622,500	-100%	\$0	\$622,500	-100%
Molokai	0	0	0	N/A	\$0	\$0	N/A	\$0	\$0	N/A	\$0	\$0	N/A
Napili/Kahana/Honokowai	1	4	-3	-75%	\$191,800	\$379,375	-49%	\$191,800	\$283,750	-32%	\$191,800	\$1,517,500	-87%
Maui Summary:	3	5	-2	-40%	\$492,267	\$428,000	15%	\$560,000	\$310,000	81%	\$1,476,800	\$2,140,000	-31%

Land Year To Date Sales Information

Comparing 1/1/2008 thru 1/31/2008 with 1/1/2007 thru 1/31/2007

Area	Number of Sales				Average Sales Price			Median Sales Price			Total Dollar Volume		
	Current YTD Sales	Year Ago YTD	Changes Units	%	Current YTD Average	Year Ago YTD Average	Percent Change	Current YTD Median	Year Ago YTD Median	Percent Change	Current YTD Volume	Year Ago YTD Volume	Percent Change
Central	0	5	-5	-100%	\$0	\$672,300	-100%	\$0	\$340,000	-100%	\$0	\$3,361,500	-100%
Haiku	3	2	1	50%	\$714,667	\$422,500	69%	\$369,000	\$422,500	-13%	\$2,144,000	\$845,000	154%
Hana	1	0	1	N/A	\$315,000	\$0	N/A	\$315,000	\$0	N/A	\$315,000	\$0	N/A
Kaanapali	1	2	-1	-50%	\$675,000	\$1,034,500	-35%	\$675,000	\$1,034,500	-35%	\$675,000	\$2,069,000	-67%
Kahakuloa	0	0	0	N/A	\$0	\$0	N/A	\$0	\$0	N/A	\$0	\$0	N/A
Kapalua	0	1	-1	-100%	\$0	\$2,015,000	-100%	\$0	\$2,015,000	-100%	\$0	\$2,015,000	-100%
Kaupo	0	0	0	N/A	\$0	\$0	N/A	\$0	\$0	N/A	\$0	\$0	N/A
Kihei	0	0	0	N/A	\$0	\$0	N/A	\$0	\$0	N/A	\$0	\$0	N/A
Kula/Ulupalakua/Kanaio	0	1	-1	-100%	\$0	\$700,000	-100%	\$0	\$700,000	-100%	\$0	\$700,000	-100%
Lahaina	0	1	-1	-100%	\$0	\$1,250,000	-100%	\$0	\$1,250,000	-100%	\$0	\$1,250,000	-100%
Lanai	0	0	0	N/A	\$0	\$0	N/A	\$0	\$0	N/A	\$0	\$0	N/A
Makawao/Olinda/Haliimaile	0	0	0	N/A	\$0	\$0	N/A	\$0	\$0	N/A	\$0	\$0	N/A
Molokai	0	1	-1	-100%	\$0	\$90,000	-100%	\$0	\$90,000	-100%	\$0	\$90,000	-100%
Nahiku	0	0	0	N/A	\$0	\$0	N/A	\$0	\$0	N/A	\$0	\$0	N/A
Napili/Kahana/Honokowai	0	0	0	N/A	\$0	\$0	N/A	\$0	\$0	N/A	\$0	\$0	N/A
Olowalu	0	1	-1	-100%	\$0	\$1,395,000	-100%	\$0	\$1,395,000	-100%	\$0	\$1,395,000	-100%
Pukalani	0	0	0	N/A	\$0	\$0	N/A	\$0	\$0	N/A	\$0	\$0	N/A
Sprecklesville/Paia/Kuau	0	0	0	N/A	\$0	\$0	N/A	\$0	\$0	N/A	\$0	\$0	N/A
Wailea/Makena	1	1	0	0%	\$600,000	\$2,800,000	-79%	\$600,000	\$2,800,000	-79%	\$600,000	\$2,800,000	-79%
Maui Summary:	6	15	-9	-60%	\$622,333	\$968,367	-36%	\$484,500	\$700,000	-31%	\$3,734,000	\$14,525,500	-74%